



# The Landscape Trust

A charity with 1000 members  
supporting the work of the  
Arnside & Silverdale Area of Outstanding Natural Beauty

**1986 - 2016**

**30 Years of Education, Publication and Conservation**

## AONB Mapping and Photography Seminar

**Thirtieth Anniversary  
Photographic Competition/Exhibition**



**Arnside Educational Institute - May 7th—8th 2016**

**LECTURES - SATURDAY (9.30 am - 1pm) Cost £6 for the whole morning**  
For booking information contact [LTevents@arnsidesilverdaleaonb.org.uk](mailto:LTevents@arnsidesilverdaleaonb.org.uk)

Time	Topic	Speaker
0900	Doors open for registration	
	<b>Session 1 - From Saxton to Satellites – the History of Mapping</b>	
0930	Introduction	Chairman
0935	Early Maps	Martin Norgate
1000	Mapping the Arnside & Silverdale Area of Outstanding Natural Beauty	Rod Ireland
1025	Beyond the OS – the wonderful world of GIS, satellites and LIDAR	Peter Standing
1050	<i>Coffee and Mapping and Early Photography Exhibition (downstairs)</i>	
	<b>Session 2 – Photographing the AONB</b>	
1120	The Pioneers – early postcard photographers	Mike Moon
1135	Landscape Photography - Capturing the essence of the AONB	Jon Sparks
1205	Estuary Photography	Adrian Almond
1230	National Geograph Photography Project	Peter Standing
1245	The 2016 landscape Trust Thirtieth Anniversary Photographic Competition	Richard Daly
1300	Lunch Break and Exhibitions	

## WEEKEND WORKSHOPS - details from [LTEvents@arnsidesilverdaleaonb.org.uk](mailto:LTEvents@arnsidesilverdaleaonb.org.uk)

Sat 2pm	Kent Estuary photography— workshop around Sandside (fully booked)	Adrian Almond
Sat 2pm	Introduction to Digital Image Manipulation— Arnside EI (20 places)	Bill Johnston
Sat 3.30pm	Introduction to GPS + making simple GIS maps (20 places)	Peter Standing
Sun 7am	Wildlife Photography at Leighton Moss - workshop (3 places still available)	David Poole
Sun 9.30am	Limestone Pavement photography — Gait Barrows (fully booked)	Adrian Almond
Sun 9.30am	Drawing the Landscape - Indoor and outdoor learning at Arnside (20 places)	Richard Daly
Sun 11.00am	Chasing tides & bores - Arnside (c 12noon) to the Bela (c. 1243) — 20 places	Mike Warren
Sun 1pm	Geocaching— indoor tuition followed by Arnside geocache trail (25 places)	Audrey Brown
	Other workshops may be added	

### EXHIBITION of the best entries to PHOTOGRAPHIC COMPETITION

SATURDAY 2 pm - 8 pm and SUNDAY 10 am - 4 pm

ARNSIDE Educational Institute (Joyce Nicholson Hall) Adults 50p Children free

GROUP	THEME	PRIZES
A	<b>PANORAMA</b> – great views of AONB landscapes – (single or photo-merged shots are welcome)	£50
B	<b>WONDERFULLY WILD</b> – birds, animals, butterflies, moths, trees, flowers	£50
C	<b>MY FAVOURITE BUILDING</b> - history to the present. Don't forget bridges and limekilns	£50
D	<b>ROCK OF AGES</b> – limestone features and other rocks including erratics	£50
E	<b>BLACK and WHITE</b> – time to get creative - monochrome or sepia images of the AONB	£50
F	<b>LOVING IT</b> - people in the AONB, residents, visitors, volunteers, or anyone enjoying the place!	£50
PRIZES	COMPETITION WINNER	£100
PRIZES	COMPETITION RUNNER UP	£50
PRIZES	BEST YOUNG PERSON ENTRY	£50
AWARDS	RESULTS OF PUBLIC VOTE ANNOUNCED	4.15PM

### EXHIBITION on the HISTORY OF MAPPING From Saxton to Satellites

SATURDAY 2 pm - 8 pm SUNDAY 10 am - 4 pm

ARNSIDE Educational Institute

admission included with photography exhibition

book stall, video displays, refreshments,



## SPEAKERS and WORKSHOP LEADERS



**Jon Sparks** is an award winning professional photographer and writer specialising in landscape and outdoor subjects. He is a passionate walker, climber, cyclist and traveler and lives in Garstang. His many books include Portrait of Morecambe Bay, Walking the World's Natural Wonders, Moods of the Lakeland Tarns, guides to Nikon cameras and the Lancashire Cycleway and most recently Arthur Ransome's Lake District.

**Martin Norgate and Jean Norgate** live in a quiet paradise at Sadgill in Longsleddale along with a library of several thousand books and maps.

They have pioneered one of the country's most valuable online reference collections of early Cumbrian maps, freely accessible to all at [www.geog.port.ac.uk/webmap/thelakes](http://www.geog.port.ac.uk/webmap/thelakes)

Their site includes a huge searchable database of old and modern photos from bell ringing to boundary stones and drinking fountains to drains.



**Rod Ireland** is a consultant geologist working in the fields of engineering and mining geology, hydrogeology and hydrocarbon exploration. He has lived in Silverdale for the last 15 years and has developed a keen interest in local history and especially in maps, local boundaries and enclosures.

He has a formidable collection of old maps and historic postcards of the Arnside & Silverdale AONB area and is currently working on an archive of historic images.

**Richard Daly** was formerly solicitor for the Yorkshire Dales National Park. He is a talented cartographer and has produced maps of the Storth area and of the AONB. His peak bagging achievements include climbing the Munros and Wainwrights and his interest in the latter has led him to coordinate a then and now history project recording change in the landscape since Wainwright made his classic Cumbrian sketches.

Richard lives in Storth and masterminded the Trust's 2011 photographic competition and he is in charge again in 2016. He will lead a workshop along the Arnside coast on Sunday called 'Drawing the Landscape'.



**Adrian Almond** After a career as a geography teacher Adrian followed his passion for photography to run landscape photography courses. His work can be seen at [adrianalmondphotography.com](http://adrianalmondphotography.com)

He has held several exhibitions and won many awards including two in the 2011 Landscape Trust AONB photographic competition. He lives in Milnthorpe and is captivated by the challenge of recording the ever changing light over the Estuary.

He will deliver a lecture on estuary photography and lead workshops along the Kent Estuary and at the limestone pavements at Gait Barrows.

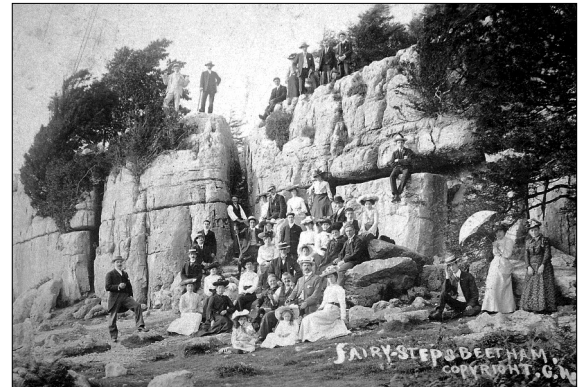


**Peter Standing** was a GP in Bury for 29 years, before reading geography at Lancaster University followed by a Masters on Cumbrian landscapes. He studied GIS mapping and remote sensing and located most of his projects within the AONB, close to his home in Storth. His dissertations were on the chronology of limestone landscape formation and he has developed several local geotrails. He organises educational events for the Landscape Trust and planned the lecture and workshop programme for this weekend.

He is pictured here with his first camera, a *Boots Beirette*, at Everest Base Camp in 1971. 42 years and 20 cameras later, he held his own photographic exhibition called '**Fifty Shades of Grey Limestone**'. His fascination with mapping led him to develop the zero points of Britain project – see <http://www.geograph.org.uk/article/In-Search-of-OV0000>

**Mike Moon** Outside his working life as an optician, Mike is a man of many talents and his interests include marine conservation, diving, natural history and landscape history. He has a collection of over 7000 early postcards of the Arnside and Silverdale AONB.

His past lectures for the Landscape Trust's **Meet the Villages** series, on early postcards, have captivated audiences in the Yealands (2012), Warton (2013), Storth (2014) and Beetham (2015). He lives in Silverdale.



**Audrey Brown** lectures for the Open University. She is a keen geologist and the chair of Cumbria GeoConservation and the Westmorland Geological Society.

She has set up many new geocaches including some around the Landscape Trust reserve at Teddy Heights. For this event she is leading a geocaching event which will start with a short classroom session at the EI followed by a trail along the Arnside coast. Some new caches will go live on May 8th for this event.

**David Poole** has been interested in all genres of photography for many years and concentrated at first on landscape and motorsport. In 2007 he began to specialise in local wildlife photography. After submitting portfolios to the Photographic Alliance of Great Britain, he gained a credit in 2012 and distinction in 2013.

He lives in Milnthorpe and is a member of the Landscape Trust and Holme & District Photographic Society. He will lead a wildlife photographic workshop.



**Mike Warren** is a keen observer of weather and tides. He set up the Landscape Trust's state of the art weather station at the AONB headquarters and will be leading a workshop chasing the bore from its arrival in Arnside to its collision with the Bela Weir.

After a GP career in Milnthorpe, Mike became secretary of the Landscape Trust. He lives in Heversham.

**Bill Johnston** will lead a classroom session at the EI aimed at photographers who would like to find out about the basics of digital image manipulation. He was the Founder Chairman of the AONB Landscape Trust and a Professor of Philosophy.



Bill lives in Arnside and is also the webmaster for the Arnside Gateway website [arnside.co.uk](http://arnside.co.uk)

# Booking Form

## Mapping and Photography Study Weekend - Arnside & Silverdale AONB

May 7<sup>th</sup> 8<sup>th</sup> 2016, Arnside Educational Institute, Church Hill, Arnside

<b>MAPPING and PHOTOGRAPHY SEMINAR BOOKING FORM</b>	Confirmation of booking and any final briefings and pre-study material will be sent out by e-mail. For those without e-mail, confirmation will be by telephone.
<b>Name (s)</b>	
<b>Address</b>	
<b>Telephone</b>	
<b>E-mail</b>	
<b>Are you a member of the Landscape Trust?</b>	
<b>Lecture Places required</b>	
<b>Specialist Photography Workshops Places</b>	
<b>Other Workshop and Field Trip Places</b>	

<p><b>I enclose payment for</b>          .....Lecture Places at £6 per person          ..... Specialist Photography Workshops £10 for non-members, £5 for members          ..... Other Workshop places are free for members and £5 non-members (per weekend not per trip). You may be able to attend more than one workshop.          Since membership of the Landscape only costs £10 per year (or £15 per household) non-members may find it cheaper to join the trust at the same time as booking.</p>	<b>Total</b>
<p><b>Field Trip and Workshop Preferences</b>          We will do our best to fit everyone into the event of their choice but occasionally this is not possible.</p>	

Please make cheques payable to **The Arnside/Silverdale AONB Landscape Trust**  
 Please send or deliver your completed booking form and payment in an envelope marked  
 Maps and Photo Bookings, AONB Office, Old Station Building, Arnside, Cumbria LA5 0HG

	<b>TIME</b>	<b>FIELD TRIPS AND WORKSHOPS</b>	<b>Places</b>	<b>Cost</b>	<b>Leader</b>
MPW1	SAT 1400 - 1630	Estuary Photography workshop Sandside	12	£10 (£5 LT members)	Adrian Almond
MPW2	SUN 0700 - 0900	Wildlife Photography Leighton Moss	12	£10 (£5 LT members)	David Poole
MPW3	SUN 0930 - 1130	Limestone Pavement photography	12	£10 (£5 LT members)	Adrian Almond
MPW4	SAT 1400 - 1530	Workshop Digital Image Manipulation	20	£5 (LT members free)	Bill Johnston
MPW6	SAT 1530 - 1700	GPS and GIS mapping	20	£5 (LT members free)	Peter Standing
MPW7	SUN 0930 - 1100	Drawing the Arnside Landscape	20	£5 (LT members free)	Richard Daly
MPW8	SUN 1100 - 1300	Chasing the Bore – Arnside to the Bela	25	£5 (LT members free)	Mike Warren
MPW9	SUN 1300 - 1530	Geocaching Arnside Coast & Knott	25	£5 (LT members free)	Audrey Brown